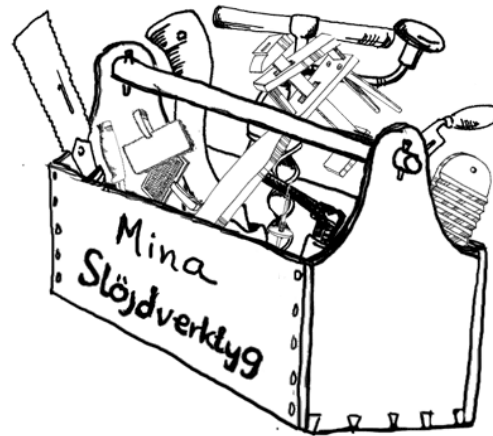
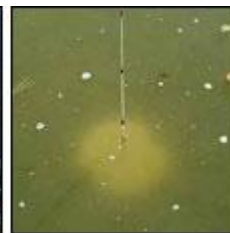
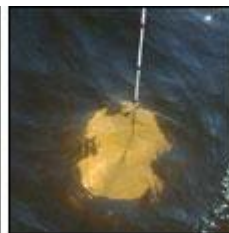


Tools for classification (bedömningsgrunder)



Some shortcomings and future problems



Problems with lack of object specific reference values

Example phytoplankton and phytobenthos

Reference values of phosphor are specific for each object and varies with a magnitude of ~ 5 within a region

Reference conditions for phytoplankton varies by factor 1 – 1,4

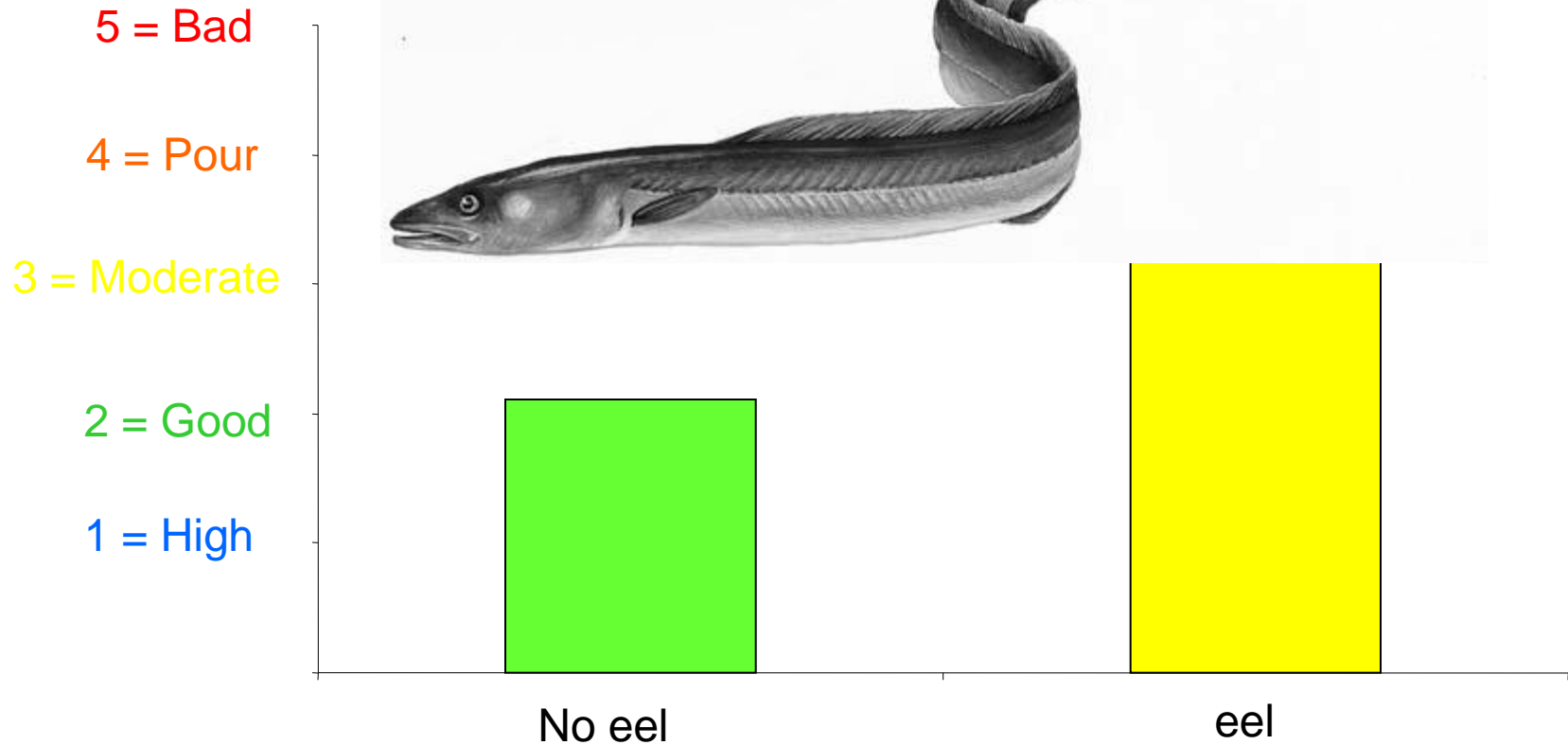
And phytobenthos by 1

We still need expert evaluations

For examples electrofishing



Fish status vs eel



Mean VIX index from about 70 electro fishing



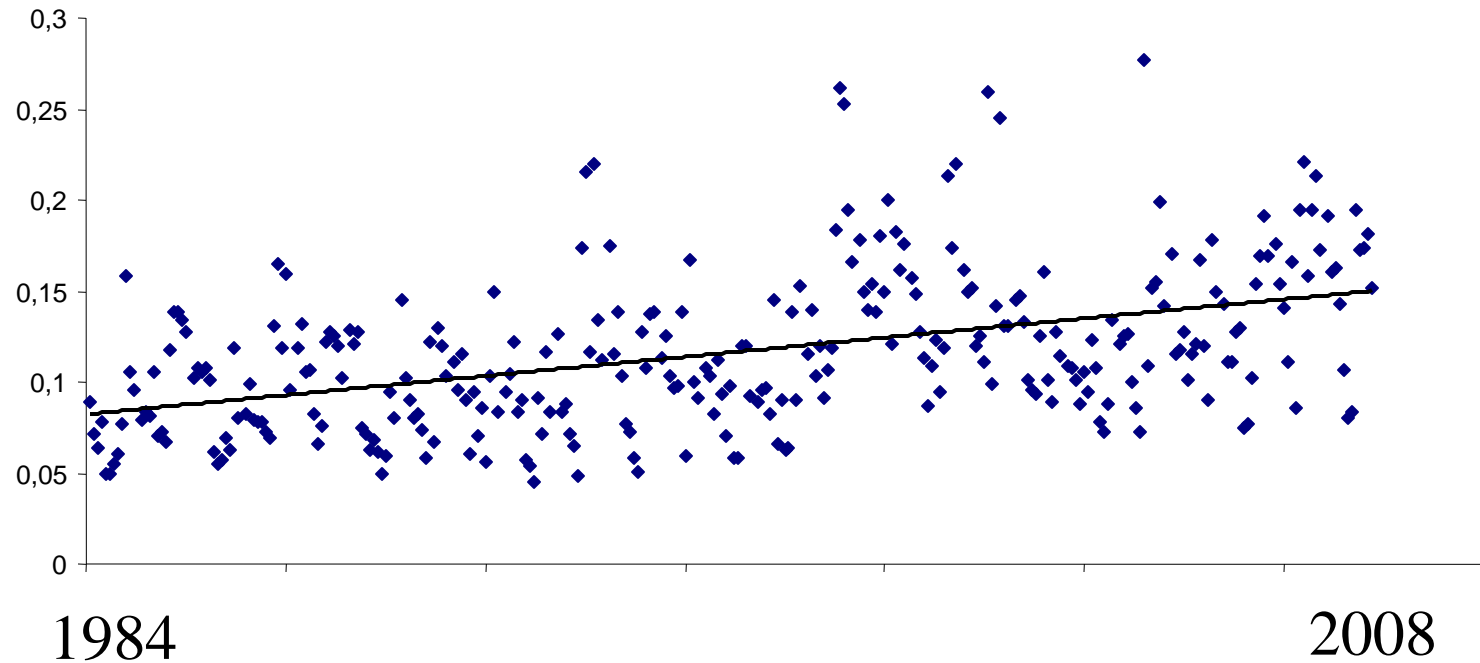
Consequence ...

- "Expert judgements" always necessary when evaluating fish status
- All "Expert judgements" are "weaker"

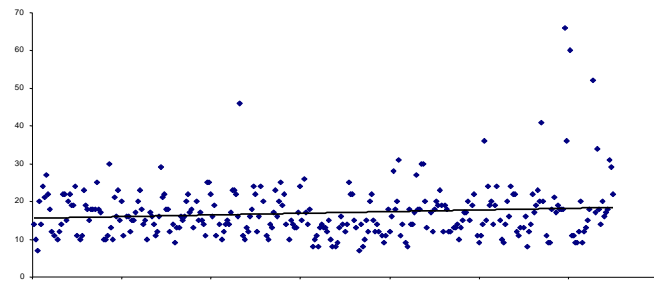


River Viskan

ABS
420

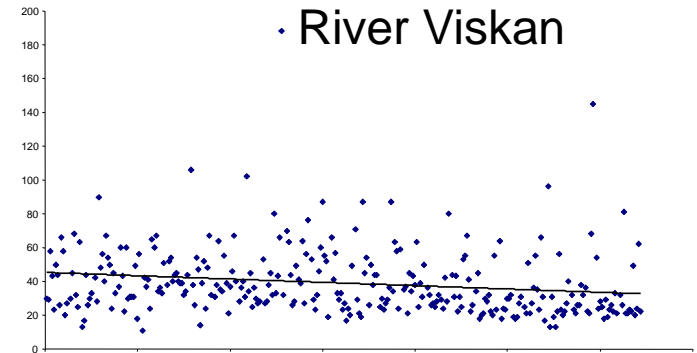


River Byälven

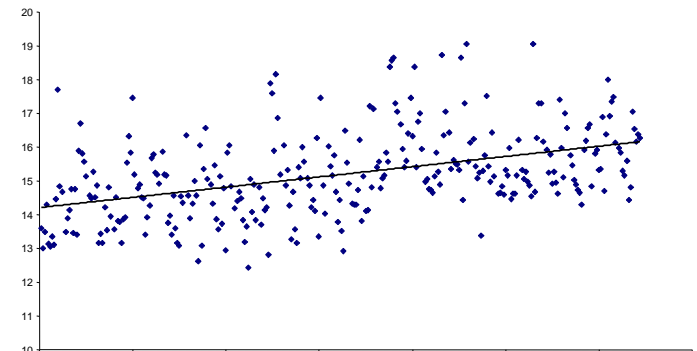
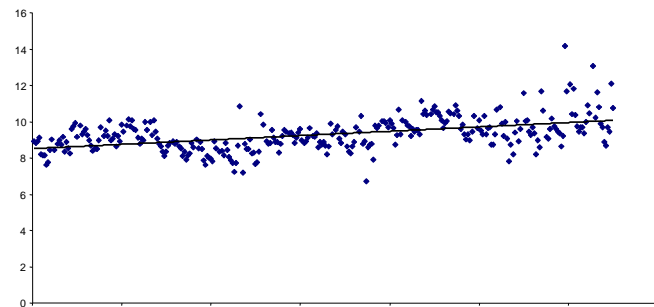


Tot-P

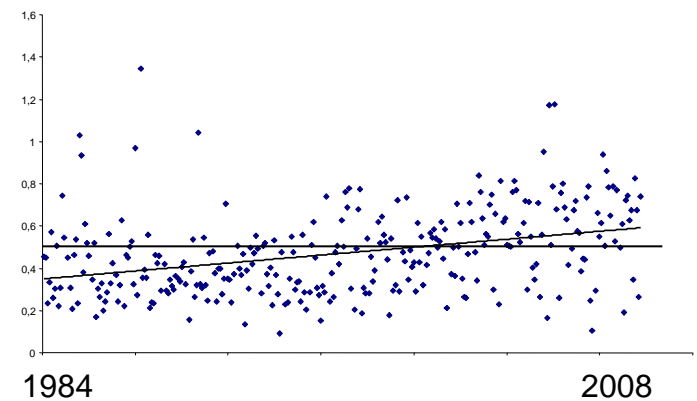
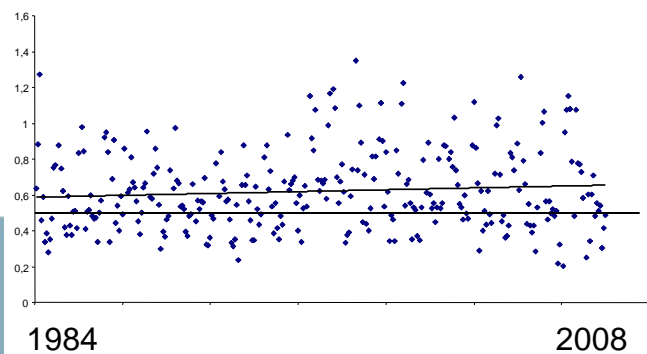
River Viskan



Ref tot-P



EQ



Acidification and liming

A debate whether liming should count as measure against acidification

Magic model has not been used in most län



Lack of biological parameters indicating problems with physical disturbance



